



## Forthcoming events

### Club Meetings

**July 1<sup>st</sup>**

**David Lowe**  
Zipped vase



**August 1<sup>st</sup>**

**Downloaded video evening**

### Club Competitions

**July**

Challenge:  
Turned Book-ends

**August**

Novice  
Lidded box with square features

### Other Events

**18<sup>th</sup> & 19<sup>th</sup> June**

**UK & Ireland Woodturning  
Symposium**  
Hilton Hotel,  
Coventry, CV2 2ST

<http://www.ukiws.co.uk/>

### Chairman's Notes

As Robbie Burns once said "The best laid plans of man aft gang astray". Having signed up to crew a sailing ship from London to Greenock via the North of Scotland, and thus complete a circumnavigation of England, Scotland and Wales, the weather forecasts for the North Sea proved to be so dire that the Captain deemed it to be more prudent to sail the other way. So back down the English Channel, turn right at Land's end and up through the Irish Sea we went. The only redeeming features being the much better weather and visits to the Scilly Isles, Dublin, and Rathlan Island off the coast of Northern Ireland before an entry in beautiful weather into the Clyde.

I have reports that Vance's demonstration ticked all the right boxes which was only what I expected. We should book him again. The attendance was, however, disappointing. Equally so was the absence of entries in the Novice Competition. Those of us who have risen through the ranks to the Challenge competition will appreciate the way in which pitting our skills against those of other club members has improved our skills. So, the message is there. Join in the fun and get more from your hobby!

We are placing an application for a stand at the Kings Bromley Show on the 23<sup>rd</sup> July, 2016. Your support in manning the stand would be appreciated along with material to sell on the stand. Here is your chance to clear out those items lurking in your workshops.

### **Philip Watts**

#### Index to contents

Editors Scribblings	Page 2
Woodworks@Davertry 2016	Page 3
June "non" Competition	Page 4
June display table	Page 4
June Demonstration - Vance Lupton	Pages 4 - 9
Tippe top	Pages 9 - 11
Hints & tips	Page 12
Items for sale	Page 12
Club information	Page 13
DVD list	Page 14



## Editors Scribblings

An even bigger issue this time! This is because Vance's ambitious, but successful, manta ray bowl demonstration dictated many photographs and his "bonus" of turning a Tippe top justified reproducing instructions on how to turn one of these fascinating toys.

Hence I have only included a brief report on the Woodworks@Davertry 2016 event. I am sure you share my congratulations to Vance Lupton in winning "best piece in show" for his leaf decorated hollow vessel. This will now form part of the AWGB travelling gallery for the next 12 months or so.

It was the first of the 2016 open weekends at Toolpost in Didcot, Oxfordshire on 11<sup>th</sup> & 12<sup>th</sup> June. I went down on the Saturday. For those of you have not been to one of these events, they are well worth it if you don't mind quite a long journey! Tracy Owen and Mick Hanbury were the main demonstrators, along with supporting demonstrations of pyrography, carving, tool sharpening, finishing products, etc. Free refreshments and snacks are provided at these events (donation to charity requested!), and of course access to the huge stock of woodturning equipment, finishes, and wood for sale. Toolpost are one of the few places I know that offer a "try before you buy" service - particularly useful if you are entering the "minefield" of



Tracy Owen demonstrated hollowing tools on the VB36.



Mick Hanbury - 5 minutes worth of shavings!



Mick's display table.

choosing a hollowing tool. They stock most of the makes and models (except for Simon Hope's ones) and are happy to help you find what suits you best (I suspect a 'phone call first would be appreciated!).



Tracy's display of hollow vessels.

Vance Lupton mentioned during his demonstration that Toolpost's stock of bowl blanks are now mainly square. I like this idea as a square blank can also be cut up to produce spindle blanks!

For more information about Toolpost visit:

<http://www.toolpost.co.uk/>

I am completing this having just returned from the UKIWS in Coventry, hopefully I will include a report on this new event next month.

I hope you enjoy this issue of Wood'n'Things, comments and articles for inclusion in future issues always appreciated!

**Hugh Field**



Mick's finished and decorated platter completed in just over 2 1/2 hours!





## Woodworks@Daventry - 13<sup>th</sup> & 14<sup>th</sup> May 2016

I visited this show on the Saturday this year, in the past I've chosen to go on the Friday. Maybe that's why it seemed less well attended. For those of you who have not been to one of these events, I do recommend that you go. I think it's an amazing achievement for a club (Tudor Rose), assisted by other local clubs to stage it so successfully. A good selection of trade stands, demonstrators, club stands and daily competitions ensure a good day out; and it's free entry and parking!

These are just a few of the things that caught my eye.



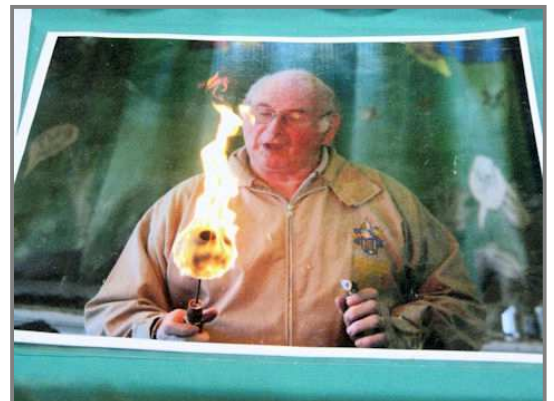
Vance Lupton's "best in show", right.



Yes, it had a PAT sticker! (above)



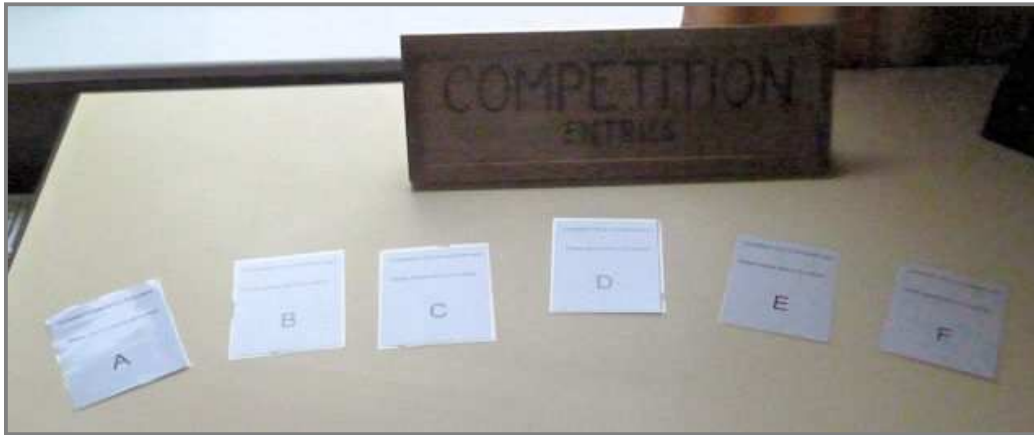
Gerry Marlow creates this effect, above, by using cellulose paint and then setting fire to it! (below).





**June "non" Competition**

This months Novice competition piece was for a pendant. The picture below says it all.....

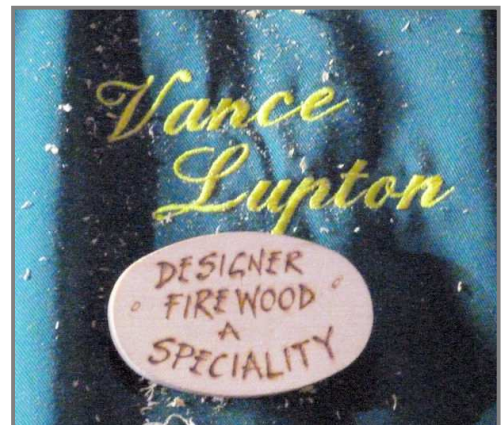
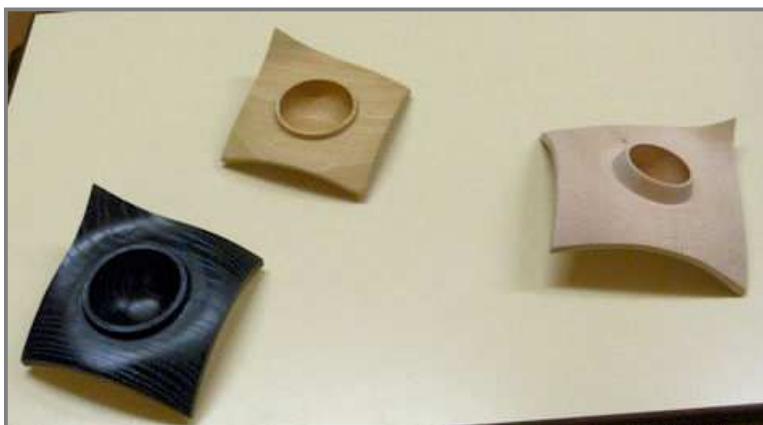


**Display table**

Simon King brought this very nicely executed bowl in Walnut for us to see:-



**Vance Lupton demonstration - Manta ray bowl**



This was Vance's first ever woodturning demonstration - the first of many more I hope!





The manta ray bowl is the signature piece of New Zealand woodturner Terry Scott and Vance had chosen to make one as his winning entry for the final round of the Challenge competition in January. This prompted a request for a demonstration, to which Vance kindly agreed. I think those that were present will agree that it was well up to the standard we have come to expect from professional demonstrators (including occasionally losing



tools and wondering what to do next!).

Terry Scott has a comprehensive website which should provide much inspiration for anyone wishing to attempt one of these striking bowls.

<http://www.timberly.co.nz/Gallery/Winged Vessels>

Vance kindly prepared a set of notes which I reproduce, with minor edits and addition of photographs, below; so any errors are likely to be mine, rather than Vance's!

- 1) Prepare your square blank as accurately as possible. (90° corners and parallel faces.)
- 2) Accurately find the centre (using diagonals), centre mark and drill a hole wide enough and deep enough to accommodate your screw chuck.
- 3) Mount the blank onto the screw chuck and bring up the tool rest.
- 4) Rotate the blank and mark on the tool rest the position of the corners (masking tape). Ensure the blank can rotate freely without fouling the rest.
- 5) If not already flat (see stage 1) true the face.
- 6) Mark out and cut a chucking spigot to suit your jaws using dividers and parting tool)





7) Mark a pencil centre line around the blank (If you intend the junction of the top and bottom wings to be nearly the same – they could be asymmetric if you choose.)



8) Begin to cut the wings (I use a 3/8 bowl gouge) into the centre and also what will be the bowl outer. Take care at the junction of bowl and wing – roll the bowl gouge over to close the flute as you approach the junction.



9) As you get closer to the finished shape keep in mind the thickness you want at the eventual junction of the top and bottom wing AT THE BOWL EDGE. It is all too easy to forget to test this from time to time (with callipers).

10) You need to have in mind the bowl shape you intend to produce from the outset. Your choice of four jaw chuck-and the availability of different jaw sets- can enable various forms to be produced though it is possible to use a jam chuck when doing the reverse of the bowl. Turn the bowl area to *roughly* the right shape and size bearing in mind that it will/can be refined later after the blending of the curved wings is done.

11) Try to get the best possible finish from the tool on this side of the blank whilst it is thicker and more rigid as when it is reversed and turned it will be much more flexible and prone to vibration, chatter and bounce. You may want to consider sanding at this point but you will have to do so again, perhaps not quite as much though, when the bowl is reversed again.

12) Reverse the blank and grip it securely in your chuck jaws.



13) Bring up the tool rest and check that the corners of the blank are equidistant from the rest. Make adjustments by repositioning in the chuck if they are very different.



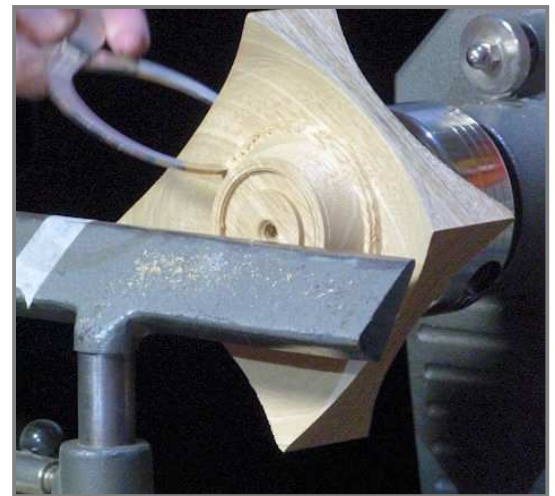


14) In order to refine the base later you will need to be able to reverse the bowl once more at the end of this next set of turning etc. To achieve this you will need to create a means of holding the blank by the finished bowl – either with a four jaw chuck or a jam chuck. I usually use a four jaw set in expansion mode to fit inside the bowl when it is turned.



15) Begin turning the top set of wings now using the same tools and techniques as before. Remember that the outer shape of the bowl should look as if it flows through the blank maintaining the same diameter and shape. Use callipers to check the position and especially the thickness at the junction with the bowl. It's surprisingly easy to get carried away with the turning and make it too thin - even to having the wings separate completely from the bowl!!

Because the material becomes thinner in the centre you are most likely to experience more vibration when turning these wings – do your best to get the best finish you can. N.B. Terry Scott uses wooden supporting posts behind each corner hot glued in place.



16) When happy with the shape it is time to begin removing the wings that aren't required for your design. I usually have three down facing wings and one up.

What tools to use? What tools have you got? I use a pull saw to very roughly cut off the corners – leaving plenty of material still to work with other tools. A traditional bow saw would work well, a coping saw too is a good choice - though a little slower, and also a back saw can be used.



17) Once the bulk of corners are removed it is then time to work through other tools to remove the material, blend the curves and eventually end with a smooth finish. The following hand tools are all possible: *Woodworkers rasps, Surfboards, Microplane files*, etc but I prefer to use power tools whenever I can and use a *Proxxon Long Neck Angle grinder* fitted first with a *Arbortech Mini Carving Blade* then a *Saburr Tooth Carbide Disc* and then a *100 grit abrasive flap wheel*. I then change to a drill and use the woodturners traditional foam pads with abrasive discs, working



through to 400 grit. I normally finish by hand working through the last two or three grits with the grain of the wood.



18) Refine the bowl outer and sand if necessary.

19) Hollow the bowl to a suitable depth using whatever tools you have for this purpose. Bowl gouges or hollowing tools are all acceptable. Sand to a finish.

If necessary define a border about 5mm away from the outside diameter of the bowls interface with the wings. This will help especially if texturing/pyrography work is going to be done.



20) When completely happy with this, the top of the bowl, remove from the chuck, reverse and grip it by utilising the bowl. I use a four jaw chuck in expansion mode – but be careful not to apply too much force!!!!





21) Check the blank rotates evenly and without a wobble and then refine the underside of the bowl using the same tools as before to reach a good finish.

22) Now address the bowl and its foot. If you have decided to have the bowl stand on a foot then now you need to produce this using the tools as you would normally to produce a foot on any other bowl.

23) Texture and/or pyrograph your bowl carefully – if that is your intention.

24) Sanding seal and finish your work.



+++++

To complete his demonstration, Vance turned a “Tippe Top”. Some of you may be familiar with this intriguing toy.

### Tippe Top

*A top that starts off spinning on its base – but then ends up spinning on its stem!  
(....but only if it's made accurately!)*

1. Begin with a generous amount of material (140mm or so) held in a chuck and turn to a 32mm diameter cylinder.



2. Mark off the critical dimensions with a pencil –length of the top 37mm, length of stem 12mm from the end, and the widest point of the radius. (Note that it isn't a true radius – the base, though still a continuous curve, is squashed to give a more pumpkin like shape.) (See drawing below.)



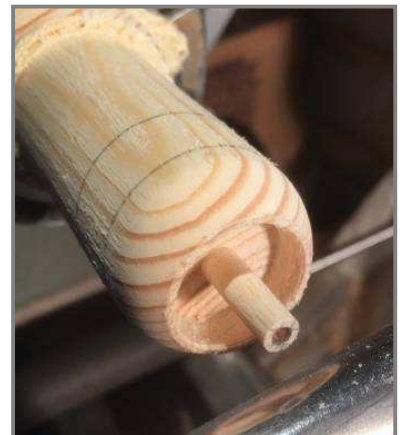
3. Take the stem area down to its final diameter of 6mm.



4. Create the radius of the body between the widest point toward the stem. Check that the upper part of the body finishes at 25mm diameter.



5. Use a parting tool to deepen an area around the stem so that the stem extends into the body a further 8mm. The wall thickness needs to be 1.5mm at the outer edge.



6. Now switch your attention to the other end of the base and begin to bring the radius around to the bottom.

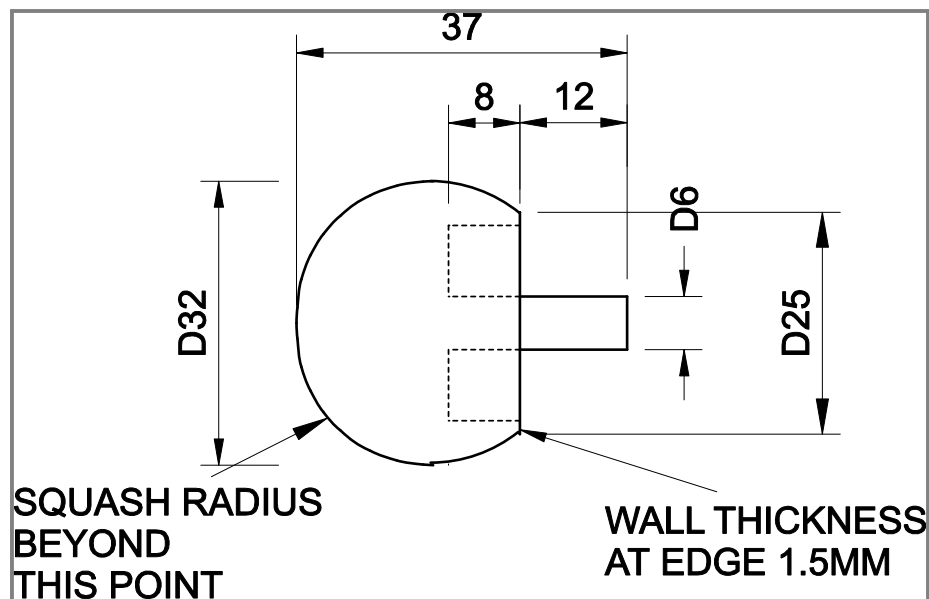
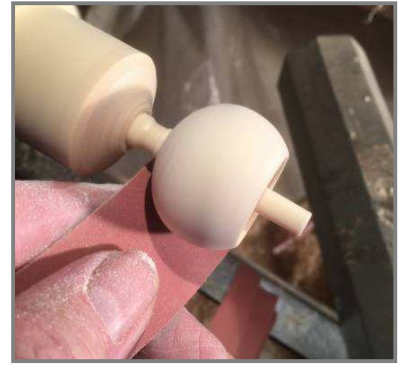
7. Continue to refine the outside shape of the top until it looks a smooth, even curve without any flats or bulges. The shape here is not quite a sphere, but is more squashed at the end to give a pumpkin like final shape.







8. Sand the curve to a smooth, even curve.
9. Make the final cuts to the base with a skew (long point down) and part off. Make sure the end is blended into the curved shape already created.
10. Finish with sanding sealer and at this point you could also colour your Tippe Top before applying a suitable finish of your choice.



**Vance Lupton.**

(Extracted and amended from an original article by Michael Cullen in his book - 'Tops: Making the Universal Toy').

*If you've not seen how one of these tops works, there's a video of a commercial one here:-*

<https://www.youtube.com/watch?v=AyAgeUneFds>

*I have made a number of these in the past and can confirm that some experiment is required in getting the curve right, otherwise the top will stubbornly refuse to flip over, any vestige of a point at the base and it will not work! Often only a slight adjustment with abrasive is required and I've even had a situation when a top will perform perfectly before finishing with sanding sealer, but fail to work after finishing! It helps if you have, or can devise, a suitable means of holding the top by its stem for any rework that may be required. I use a collet chuck to assist with this.*

*Tinker with the dimensions at your own peril!*

**Hugh Field**



## Hints and tips

This section is for any tips or advice you would like to pass on to other members. If you have discovered something you found useful, that you think may benefit others, please pass it on.

+++++++

## For Sale

Record Power cam lock tool-rest banjo for CL lathe twin bar lathe. Little used. I believe this is no longer available as an upgrade kit, possibly only as spare parts. £15



**Hugh Field** Tel: 0121 329 2911, see me at a Club meeting, or email at: [editor@mswa.co.uk](mailto:editor@mswa.co.uk)

## Custom Toolrests – David Fields

David is an ex member of MSWA and his grandson is able to make tool-rests, similar to the Robert Sorby system, out of round steel bar. These can be tailored to suit your requirements i.e. tool-post stem and length of the actual tool-rest. At the moment he is only doing straight tool-rests but bowl rests may be feasible in the future.

And if you have a Record lathe and do small spindles, he has developed a cranked tool-post, allowing the tool-rest to get close to the work, without the banjo dropping off the front bed bar. If you would like to see one, or want to discuss your requirements, please have a chat with David on 01283 229072.

## Carnauba wax polishes – Paul Bellamy

Following the favourable reaction to the polishing kits Paul started earlier this year, he has established a supply of carnauba wax flakes. These can be used to make your own 'sticks' or mixed with other components to make a range of polishes. He is selling these in 250g bags but could do larger quantities if you need it. He also has some ready-made wax blocks, comprising 60% beeswax / 40% carnauba. These are softer than most 'wood-turning

sticks' but he prefers this as it doesn't score your work.

He also has more of his 'Buffing kits', similar to Chestnut's system. For more details, e-mail him at [paul@pnbellamy.co.uk](mailto:paul@pnbellamy.co.uk)

*[David and Paul are members of Derwent Woodturning Club, as am I, so I could act as "go between" on these if required - Hugh Field]*

## Merchandise



## Abrasives and other items

### Mirka Abranet 70 x 125mm Sheets:

5 x Mixed Grit Pack (120, 180, 240, 400 and 500) = £2.00 per pack

### Mirka Abranet 50mm Sanding Discs:

7 x Mixed Grit pack (80, 120, 180, 240, 320, 400, 600) = £1.50 per pack

### Rhinogrip 50mm Sanding Discs:

7 x Mixed Grit pack (80, 120, 180, 240, 320, 400, 600) = £0.90 per pack

### Flexipad Sanding Pads (for above discs):

50mm Velcro Conical Spindle Pad with 6mm shaft = £8.82 each

### J-Flex Sanding Paper:

5 x 1m lengths mixed grits 120, 180, 240, 320 & 400 = £9.50 per pack

### Screwdrivers:

Various sizes donated to club = £1 each

### BondFix Superglue:

50g Bottle of Medium Viscosity = £3 per bottle

### Donated Items:

Various Books and Magazines = 50p to £2 each





## DVDs

The list of DVDs available for loan is on the next page.

If any members have DVDs which are not on the list, but which they would like to donate to the Club, they would be most welcome.



## Club information

Your club committee for 2016 is:-

**Chairman - Philip Watts**

Email: [chairman@mswa.co.uk](mailto:chairman@mswa.co.uk)

Tel. 0121 308 7838

**Secretary – John McElroy**

Email: [secretary@mswa.co.uk](mailto:secretary@mswa.co.uk)

**Treasurer – Vance Lupton**

Email: [treasurer@mswa.co.uk](mailto:treasurer@mswa.co.uk)

**Events Secretary – Ted Gill**

Email: [events@mswa.co.uk](mailto:events@mswa.co.uk)

**Newsletter editor – Hugh Field**

Email: [editor@mswa.co.uk](mailto:editor@mswa.co.uk)

Tel: 0121 329 2911

**Webmanager – Hugh Field**

Email: [webman@mswa.co.uk](mailto:webman@mswa.co.uk)

**Health and Safety Advisor - Hugh Field**

Email: [health.safety@mswa.co.uk](mailto:health.safety@mswa.co.uk)

**Dawn Hopley**

Please only use phone numbers if absolutely necessary



## DVDs

The club has a selection of Woodturning DVD's that are available for registered club members use only. You can borrow them for just £2 per month (some are free)!

Current List of DVD's available:

Club Ref.	Description		Cost per month
MSD1	AWGB Instant Gallery 1991 to 2003		Free
MSD2	Sharpening Woodturning & Carving Tools	The Guild of Master Craftsmen	£2
MSD3	Turning Projects with Richard Raffan	Selecting wood and various projects	£2
MSD4	Turning Wood with Alan Holthm	Project No.3 A Table Lamp	£2
MSD5	Colouring Wood with Jan Sanders	The secrets behind various wood finishes inc. liming and gilding	£2
MSD6	The Trent Bosch 3 disc collection	Vessels of Illusion, Decorative Bowls & Sculpting Wood	£2
MSD7	Bowls for Beginners with Ray Jones		£2
MSD8	Missing DVD	Last borrowed by Pete Harland	
MSD9	Making & Decorating Platters	Mick Hanbury DVD	£2
MSD10	Making & Decorating Boxes	Mick Hanbury DVD	£2
MSD11	Jimmy Clews "Turn it On" vol. 1	A footless bowl, and oriental style box and tool sharpening	£2
MSD12	Jimmy Clews "Turn it On" vol. 2	A Ziracote Bowl with Brass Inlay, A long stem Goblet and preparing a fallen tree for turning	£2
MSD13	Jimmy Clews "Turn it On" vol. 3	A Lidded Box, Footless Bowl with Silver Highlights with ~The use of CAD to design projects	£2
MSD14	All Glued Up with Sue Harker	A study in Open Segmented turning	£2
MSD15	Turned Out Nice Again with Sue Harker	A study in Involute Turning	£2
MSD16	Missing DVD	Last borrowed by Pete Harland	£2
MSD17	Woodcut Turning Tools promotional DVD	The Woodcut Bowlsaver and Pro-Forme hollowing tool	Free
MSD18	Missing DVD	Last borrowed by Pete Harland	
MSD19	Inlaid & Novelty Boxes with Chris Stott	Box making and decorating techniques	£2
MSD20	An Introduction to Fine Woodturning with Simon Hope	"Hope For Us All" vol.1 with Simon Hope	£2
MSD21	A Burr Hollow Form with Pewter Finial	"Hope For Us All" vol.2 with Simon Hope	£2
MSD22	Wet Turning with a Difference with Stuart Mortimer	Wet wood turning with a difference!	£2
MSD23	The AWGB Seminar 2011	Images and Gallery from the 2011 convention	Free
MSD24	Turning Green Wood with Mick O'Donnell	Thin wall turning of green of fresh timber. DVD also includes Tool Sharpening techniques	£2
MSD25	Missing DVD	Last borrowed by Anne Hopkinson	£2
MSD26	Turning a Half Sized Hat with Andrew Hall	Live demonstration of hat turning	£2
MSD27	Turning a Small Corinthian Helemy and Stand with Andrew Hall	Another live demonstration by "The Hat Man".	£2

Dawn Hopley has taken over the responsibility for these items and may be seen at Club Meetings