



*Mid-Staffs Woodturners
Association*

Affiliated Branch of

**Association of
Woodturners
of Great Britain**



Volume 1
Issue No. 2

February
2018

Wood 'n' things

News Letter

Chair
Dawn Hopley

Editor
Phil Williams



*And this month's
Winner is.....*

Editors Workbench

This year has got off to a flying start, continuing on from our AGM in January. Our February meeting had a good attendance of members and five visitors, who turned up on the night to see our Pole Lathe Turning demonstration given by Mike Taylor.



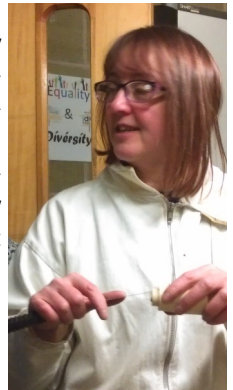
Phil Williams

Meeting Calendar

March

Fri 2nd - Demonstration - Dawn Hopley

Our current Chairperson, Dawn Hopley, will be going “Totally Quackers!” and show us ideas for turning small birds and animals. Dawn was inspired at Christmas Craft Fayre by two other club members, Geoff Payne and John McElroy, who were selling penguins and geese all turned on the lathe. After seeking inspiration off the internet, she will be passing on a few ideas for turning small ducks and other birds. With Easter fast approaching, I’m sure you will all be turning little chicks and ducks as well.



March

Sat 10th-Sun 11th - Wolseley Centre Craft Fayre

Attending the annual craft fayre over the Mother Sunday weekend. Volunteers required to man the Club stand. All contributions gratefully accepted and we look forward to seeing you all there.



April

Fri 6th - Demonstration - Dawn Hopley

Due to the cancellation of March's meeting, our demonstration from Dawn Hopley has been rescheduled to April. The format will be the same and she will be going "Totally Quackers".



Forth Coming Competitions

March

Challenge Trophy - A Vase

Now a vase sounds relatively simple, but as this is the Challenge Trophy, it is a good opportunity to showcase your ideas and skills. You could have a go at colouring, pyrography, or segmented turning for example. The biggest challenge will be to make it watertight for freshly cut flowers. Or maybe give it a glass liner? The choice and ideas are yours. Here are a few examples.

If you do want to use a glass liner and don't have time to trawl your local charity shops, then try online suppliers such as www.ampulla.co.uk.



April

Novice Trophy - A Spinning Top

Now our Novice Trophy competition for April is a spinning top. Below are examples to give you ideas for your entry.

Best of luck and we look forward to seeing the results of your work.



Since Our Last Meeting

Pole Lathe Turning

(Friday 2nd February)



It was a Club welcome to Mike Taylor for his first demonstration at MSWA. The Club has been trying for quite some time to get Mike along to demonstrate the skill of Pole Lathe Wood Turning.

Several years ago, Mike purchased a small woodland area of about seven acres. This woodland had been neglected for some time, so Mike set about clearing and planting some areas and coppicing others. Coppicing has a 5 year cycle, first clear and cut back the trees to a "stool" and this will now encourage good strong, healthy growth over the next 5 years and be ready to cut again. It also allows light and air to get into that area and helps prevent fungus and decease from rotting the trees.



In addition to clearing some wooden areas and caring for the woodland, Mike is a great believer in preserving local trades as well, so he employed the pulling power of Local Shire heavy horses. They can get to areas that tractors would have difficulty to reach.

As you can see it did take a short while to set his lathe up, but after a few tests and minor adjustments, away he went with the demonstration. Wood Turning with a pole lathe is definitely a learnt skill that takes time and practise to get it right. One learns to cut on the down push of the leg and relax a little when the pole rotates the piece of work in opposite direction while the pole returns to the upright position.



Mike tends to work with “green wood” and especially with alder wood as he finds it easier to work on this type of lathe. Alder has a light brown colour with subtle grain patterns that are straighter than other hardwoods, such as oak or ash. Alder is used for furniture, cabinets and picture frames, and in other custom woodworking projects.

When Mike turns bowls out of alder wood, he prefers to use individually crafted tools that look more like sharpened hooks instead of the standard type bowl gauges. He also hollows the bowl and leaves an authentic thickness, as it would have been done many years ago. Some of his bowls have been featured in period set television programmes.



To finish off the bowl, Mike carves off the chucking points.

Mike, thank you for a most informative and entertaining demonstration.



Phil Williams

Members Work

From time to time, our members exhibit their work at club meetings. This month Ted Gill brought in these beautiful flowers. Ted turns these from green wood which then bend and twist as they dry to produce a more naturalistic form. He has been refining the design for a while now and the results are simply stunning. The addition of small LED lighting enhances the overall effect that would grace any home or art exhibition. Well done Ted.



Dawn Hopley

Competition Results

(February 2018 Meeting)

Our February challenge was a Garden Dibber and as we know can come in all different lengths and sizes. The points scored will go towards the Novice Trophy, which is presented at the end of the year at our AGM.

In reverse order, in 3rd place was entry E, by John McElroy, in 2nd place was entry D, by Ivan Cotterill (who re-joined the club in February and this was his first entry) and the winner, in 1st place was entry B, by Will Rose. Well done to all the entrants.

Once again, it was great to see the high number of entries and the standard of each was excellent.

A



B



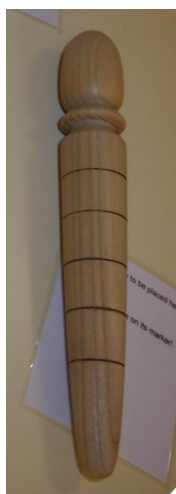
C



D



E



F



MSWA Contacts

Chairperson - Dawn Hopley
E-mail: chairman@mswa.co.uk
Tel: 07860 501379

Secretary - Will Rose
E-mail: secretary@mswa.co.uk
Tel: 01543 490309

Treasurer - Phil Williams
E-mail: treasurer@mswa.co.uk
Tel: 07753 416955

Membership - Vance Lupton

Come & Join Us

We usually meeting on the first Friday of the month between 7:00pm and 10:00pm. Visit our website www.mswa.co.uk and click on the Meeting Calendar to confirm the dates.

We Meet At

Etchinghill Village Hall
East Butts Road
Etching Hill
Rugeley
WS15 2LU

How to Join

MSWA encourage new members to develop their skills of wood turning. To obtain a Membership Application Form, visit our website and click on the Contact Us in the menu bar and download an application form.

Advertisement



Mike Taylor likes working with Alder Wood. If you would like to try this hardwood or have tuition on Pole Lathe Turning then contact Mike on 07871 994959 and mention MSWA.

Past Chairpersons

| | | | | | |
|--------------|-----------|-----------------|---------------|------------|-----------|
| Ken Allen | 1989- | Gerald Adderley | Peter Worrall | 1997-2005 | |
| John Smith | 2005-2010 | Dawn Hopley | 2010-2012 | John Smith | 2012-2013 |
| Philip Watts | 2013-2016 | | | | |

Mid Staffs Woodturners Association meets on the first Friday of every month between 7:00pm and 10:00 pm