



Future Events

May 17th - MSWA Special event day

CHADS, Armitage
All day, hands on, club demonstrations, tool trials, Bandsaw, grinding and saw sharpening workshops. Big prize raffle. Tea & cakes!!
Come and support your club.
See web link for location

June 5th - Club night

Jim West demonstration on turning fruit and colouring.

July 3rd - Club night

Graham Lovett demonstration.

July 4th - CHADS Garden Party

July 18th - Alrewas show

July 25th - Kings Bromley show



Club Competitions

June Novice cup

A key ring.

July Challenge cup

An involuted turning

Premier Cup, January 2010

A piece of abstract art!!!



Notes from the Chairman

This month's demo by our own "father" of the club was an interesting follow up to Mick Hanbury's demo in April and Gordon took the opportunity to emphasise the importance of design proportions on a turned platter, before going on to show some of the features that can so effectively enhance the finished appearance. The use of some clever bead and cove work on both the extreme and inner edge of the rim makes such a difference to the final appearance and you can see why Gordon has had so much success with his work over the years. We also had the opportunity to "compare and contrast" as the exam questions often state, on the different texturing and colouring techniques employed by both turners, particularly as both chose the black and white contrast theme. In passing I must pay tribute to Gordon's determination not to let us down on the night and despite an obvious sore throat saw the whole thing through like the trooper he is.

The other aspect of this month's demo was the use of a projector and screen as a possible alternative to the TV monitors we normally use and it would be interesting to hear members' feedback on this. We have a sub committee looking into all aspects of making demo's easily seen and what course of action would best meet the aesthetic and budgetary criteria, so members opinions will be welcomed I'm sure. The sub committee members are Paul Bellamy, Dawn Hopley and Roy Fellows, so that you know who to pass your opinions on to.

As I am sure you are all now aware, we are having our Special Events day on the 17th of this month which will provide the chance for "hands on" sessions, the purchase of exotic timbers, learning how to get the best out of your bandsaw, how to sharpen a handsaw, try out different grinding jigs, try out some of the special purpose tools, buy or sell tools or other equipment and more besides. However, it will also give the opportunity for something else which is just as important to my mind, that is the chance to have a social aspect to club membership. Whilst all of us who have taken part in shows and demonstrations have enjoyed that aspect, what we have also found is the pleasure in having the chance to talk turning (and a thousand and one other matters,) with like minded people. This is something our normal club meetings leave little time to do, but Sunday the 17th will give us a golden opportunity and I look forward to seeing as many of you as possible on that day. You will also have the chance to show off your handiwork on the lathe, not only the pieces done for club competitions, but those other projects which we all get into either by our own choice, or as often happens, by a request saying you do wood turning, can you make me a so and so? So come on, bring it on!

John



Editor's scriblings

As the Editor I am constantly trying to find things to include in the newsletter and I am grateful for anything that gets sent to me. I tend towards those associated with woodturning but sometimes I get something that I think is worth inclusion on its own merit. Ron Dixon has sent me two emails this month, both of which had me smiling so I make no apology for including them in the newsletter. With all the doom and gloom around at the moment we all need things to cheer us up.

The other new thing this month was the trial of a projector for viewing the demonstration. It had one advantage for me; that I could take photos of the close ups, as you can see in the write up of Gordon's demo. I appreciate more work needs to be done on the setup but I would like to hear of any comments on this method of presentation - good and bad.

Finally, can I remind everyone of the member-to-member sections, primarily the Sales and Wanted. I find it embarrassing when I am monopolising the sections but they are there for everyone to use. And to prove that I believe Tom got a drive centre for his lathe as a result of his request last month so if you need something or have something to sell, give it a try. You might be surprised!

See you all at CHADS!!

Paul

What is it?

Can you identify the object in the picture?
Send your answers to me and the first person with the correct answer will have their name published in next month's newsletter.



Last month's picture was the nozzle on an airbrush. So far nobody has got the right answer but Derek Pyatt gets the prize for most exotic reader location as he emailed his answer from Dubai, or can you do better than that?

Maybe we should have a competition for the picture of you turning in the most novel location. I know one club member who has converted a bedroom into their workshop, and another who recently purchased his fourth lathe and uses all of them, albeit not all at the same time.

Bowl gouges, small, medium, large and Texan!

I recently had a discussion about tools that was based on the following question.

Which is the bigger tool an American 1/2" or a traditional 12mm UK bowl gouge?

The answer is more interesting than you would think and may be something to discuss at the Special Events.



Club information

Your club committee for 2009 comprises:-

Chairman - John Smith

Tel. 01889 577380 Mob. 07976 913811

Email: chairman@mswa.co.uk

Secretary - Dawn Hopley

Tel. 01543 878714 Mob. 07860 501379

Email: secretary@mswa.co.uk

Treasurer - Roy Fallows

Tel. 01543 491826

Email: treasurer@mswa.co.uk

Assistant treasurer - Post vacant !!!!!

Tel.

Email:

Events secretary - Geoff Payne

Tel. 01543 480744 Mob. 07775 518769

Email: events@mswa.co.uk

Abrasives - Terry Gray

Tel. 01889 576921

Email: terrygr-marg@tiscali.co.uk

Raffle - Margaret Hill

Tel. 01543 876187

Email: margaret.hill@mswa.co.uk

Newsletter editor - Paul Bellamy

Tel. 01543 472669 Mob. 07946 980978

Email: editor@mswa.co.uk

Member's representatives

Peter Worrall

Tel. 01785 840370

Email: worrall9pn@btinternet.com

Ron Barnsley

Tel. 01902 685754 Mob. 07760 474672

Email: ronbarnsley@sky.com

Please only use phone numbers if absolutely necessary.



Next issue

Write up on Jim West demonstration

Review of the Special Events Day.

That said, articles, pictures etc. from any other members will help keep the newsletter going. After all it is YOUR newsletter.

SHOP Merchandise



Clothing

The club has a selection of items for sale, all featuring the club name on a blue background.

| | |
|--------------------------------|---------------|
| Sweatshirts (dark blue) | £12.00 |
| T-shirts (light blue) | £7.00 |
| Baseball caps | £6.00 |

The T-shirts are ideal for the workshop at this time of year; nice and cool, but they are also smart enough to wear down the high street.

See John Smith at the club meetings if you would like to purchase any item of club clothing.



Abrasives

If you need that finishing touch, Terry Gray has packs of Abranet, recommended by demonstrators and other club members, at £2.10 for a set of 7 sheets - 120 -600 grit.



Newsletter Archive on CD

A CD is now available with all the newsletters for 2006, 2007 and 2008, together with images of the original newsletters from '94-'98. The cost is £2.50, which includes a contribution to club funds. If you would like one, please let me know. Paul



Books and DVDs

Just a reminder. The club has books and DVDs for hire. There is quite a selection and the fee helps support the club.



Wood 'n' things



May competitions results

This month was a set of 6 coasters complete with holder



First place – Philip Watts



Second place – Albert Heath



Third place – Geoff Payne

All three were excellent and the woods used were superb. Well done!

Only great minds can read this

This is weird, but interesting! My thanks to Ron for sending this in.

**fi yuo cna
raed tihs, yuo hvae a sgtrane mnid too**

**Cna yuo raed tihs? Olny 55 plepoe
out of 100 can.**

**i cdnuolt blveiee taht I cluod aulacilty uesdnatnrd waht
I was rdanieg. The phaonmneal pweor of the hmuan mnid, aoccdrnig to a rscheearch
at Cmabrigde Uinervtisy, it dseno't mtaetr in waht oerdr the ltteres in a wro d
are, the olny iproamtnt tihng is taht the frsrit and lsat ltteer be in the rghit
pclae. The rset can be a taotl mses and you can sitll raed i t whotuit a pboerlm.
Tihs is bcuseae the huamn mnid deos not raed ervey lteter by istlef, but the
wrod as a wlohe. Azanmig huh? yaeh and I awlyas tghuhot slpeling was ipmorantt!**

I would be interested to know how many members managed to read this with ease. And it makes you realise just how good is that computer between your ears! Then you read the comments about computers, also submitted by Ron Dixon and your doubts are restored.



Wood 'n' things



Gordon Fradley - Presenting platter profiling, painting and perforations



Gordon is renowned for his attention to detail and his first concern was that he might be duplicating last month's demonstration but that certainly was not the case as events proved. He was also good enough to be the 'guinea pig' for the trial of a projector so had to cope with a different location for the lathe and a 'ghost' watching over his shoulder. And on top of all that he had come down with a cold so was struggling with his voice. Thank goodness his determination to continue prevailed.

One problem we had encountered during a rehearsal of the demonstration was that large pieces of wood have a lot of momentum and when the lathe was switched off, this managed to unscrew the faceplate. A useful reminder to anyone who is turning large pieces to be aware of this.

Starting with a part turned blank of sycamore mounted on a faceplate, Gordon explained some 'golden rules' for platters. He showed us some examples of earlier platters he had turned which did not conform to these rules and how they did not quite look right. The foot should be about 1/3 the diameter and the flange about 1/6. The results spoke for themselves but if you disagree.... I am sure Gordon would be happy to discuss your ideas.

The perimeter of the blank was trued up with a long grind bowl gouge, using a pull cut. The surface was finished using a curved scraper but in shear mode, where the edge is angled to the wood, cutting instead of scraping.

With the flange completed, Gordon could start to decorate it. The first technique used a point tool to cut a bead at both edges of the flange. This tool is pushed into the wood then the edge is rolled across to create one half of the bead. Rolling it the other way completes the other half. (Editor's note: I will have one of these to try at the Special events day.)

To finish the work Gordon uses Velcro sanding discs to power sand the surface. This is a very effective technique but one problem is storing the disks. His solution is to punch a hole in the centre of the disk, as this is a 'dead' area. The disks can then be stored on pegs. Simple but very effective.



Much to our amazement, Gordon took his bowl gouge to the surface and removed all his work, ready for the next technique but even that was an opportunity to remind us to keep our tools sharp with frequent grinding.

Using a spindle gouge he cut a cove on the edge of the flange where it met the bowl section. Then, using a parting tool he cut flats either side of the cove. The combination worked very well but this too succumbed to his bowl gouge to give another blank canvas.

The next design used his curved scraper to drop the outside of the flange, creating a sweeping curve from the bowl to the edge. This thinner edge on the flange would lighten the appearance of a platter.

The flange can also be decorated and the first idea used a small spindle gouge that had been reground to make a beading tool. The tip is ground flat across but at an angle that results in two prongs that will form the edge of the bead. Ashley Iles recently started selling a dedicated tool of this type but if you have an old or spare spindle gouge you could make one yourself. The bead should only be cut into the existing surface, stopping when the flute is fully used. You would not get a good finish if you try to go any deeper. Another advantage of this tool is that it is very easy to create regularly spaced beads, just put the right hand prong in the left hand groove of the previous bead to cut the new one. Then repeat this across the surface. Gordon still prefers the point tool to create beads but the technique is an easy one to use. But if you want functional platters, don't put grooves in your platters, as they will be impossible to keep clean.

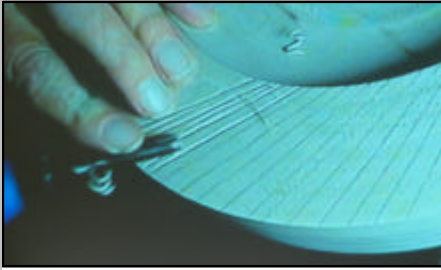
At this point Gordon replaced his first blank with another piece of wood, as he wanted to show us some more decorative ideas. After facing up the surface he used a texturing tool to mark the surface. These tools come with a selection of 'cog like' cutters but the end result is rather indeterminate as it depends on many other factors - the angle of the cutter, the speed of rotation, the amount of pressure of the tool against the wood and even the wood itself. This time Gordon used the tool at about 45 deg., with the wood rotating fairly slowly. The result was a roughened surface with some form of pattern. This was sanded to remove any rough or loose areas and then Gordon chose to paint it. Using sponge brushes he applied sweeps of black acrylic paint. Even this offered more decorative ideas. He wanted to keep the paint just on the surface of the wood, highlighting the grooves but the brush strokes themselves added to the pattern.



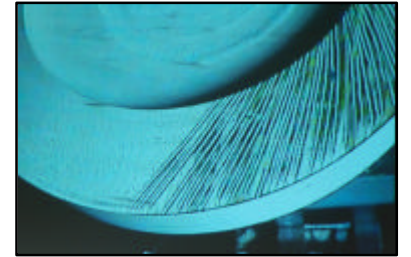
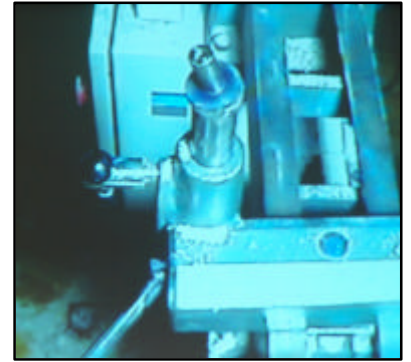
Wood 'n' things



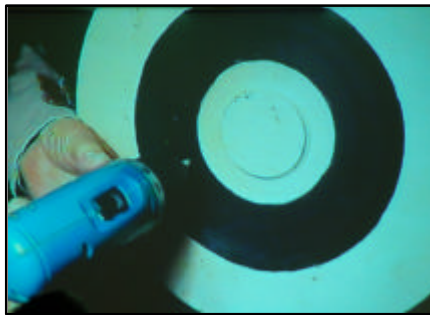
A variation of this effect was achieved by carving the flange. After preparing the surface, Gordon used a piece of wood resting on the lathe bed to mark lines across the flange. These are at a consistent angle, determined by the height of the wood. The piece was taken off the headstock and remounted on Gordon's own design carving mount. This is a modified toolpost with the top cut and welded at an angle.



Using a Ryobi carver with a small gouge, Gordon traced the lines across the flange but to be more decorative, he started the first line at the outer edge but did not go all the way across. The cut on the second line started part way across and ended at the opposite edge. Then Gordon cut a small line between them. He continued with pattern around the flange and the end result was very impressive.



And to enhance the carving, Gordon used a blowtorch to scorch the surface of the wood. He did this outside for safety reasons. The finish is excellent, surprisingly so and, as I have found myself, very durable.

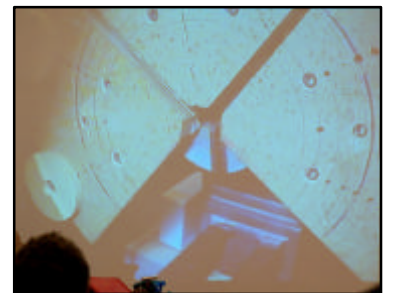


The last decorative technique Gordon showed us would use precious metal wire, inserted 'end on', into the painted surface of the bowl. As before the face was finished with the bowl gouge and scraper. Then the surface was painted with black acrylic paint. Don't use black stain or it will migrate down the wood fibres and show on the back of the bowl!

The wire is available from Cookson Gold, Birmingham, in several diameters from 0.5mm upwards so suitable holes have to be drilled in the surface. Gordon used drills from Axminster Power tools but these were 'modified' by mounting them in a section of wooden jointing dowel to serve as a depth stop.

One problem is to get a clean, flat cut across the wire. Most wire cutters use bevelled edges so the end of the wire is wedge shaped. Gordon has tried using a pair of shear cutting wire strippers but he still isn't happy with the result. Another example of his quest for perfection and evidence he is still working on this technique. The example he passed round certainly had a nice 'twinkle' to it.

The last problem with platters is removing or decorating the chucking spigot or recess. Most platters will be too big for commercial 'cole jaws' and vacuum chucks are too expensive for most of us, so Gordon showed us his own set of 'jaws'. These comprise four quadrants of MDF mounted on a set of jaws. A cross piece is fitted at the centre of the jaws and they are tightened on to this to lock them in place. Circles of wood are attached at the perimeter of these jaws and these are turned to suit the diameter of the platter. Their height allows for platters that don't have flat tops, and different size platters are dealt with by using another set of buttons, you don't have to make another complete set of jaws. (Editor's note: One advantage of the projector is I can take pictures of close ups, see the one on the right, but I need to avoid the audience!!)



It is surprising how many different ways there are to enhance our turnings, and Gordon did very well to show us so many in a relatively short time. Thanks, Gordon, for another excellent evening.



Turning tips

This section is for any tips or advice you would like to pass on to other members. It doesn't matter what it is, if you discovered something you found useful, that you think may benefit others, please pass it on.

Supernova 50mm standard jaws - Paul Bellamy

We are all advised to use the natural circle diameter of chuck jaws but to my surprise I couldn't find that specification for the Supernova standard 50mm. jaws. After contacting Nova, I can pass on that the diameters are 44.5mm internal and 53.95mm external.



Useful websites

There is an awful lot of information available on the internet but some is better than others. If you come across any good or useful sites, please let me know and I will publish them in the newsletter.

The following are worth a look :-

CHADS location for Special Events Day, May 17th.
<http://www.streetmap.co.uk/map.srf?X=410345&Y=316812&A=Y&Z=115>

(The circle gives the precise location but you can zoom in and out of the map, and print them off.)

Cookson Gold precious metals as used by Gordon Fradley

<http://www.cooksongold.com/Wire/>

Article on high speed steels used for tools

<http://www.alanlacer.com/articles/ToolSteel.pdf>



Questions and answers

This section is an opportunity for members to ask questions for other members to answer, primarily about woodturning but I see no reason why this couldn't be extended further. There is a lot of knowledge in the club on many subjects and this should be an easy way to get answers.



Items for sale or wanted

If you have any items for sale, or if you are trying to find something, send me the details and I will put it in the next issue.

FOR SALE

Robert Sorby Texan Deep hollowing tool

This is a BIG tool, 39" overall, 24" handle, 3/4" round bar with a swan neck end and a large tear drop scraper tip. I believe it is an RS 858XXLH. I got it as part of a package deal but I won't be using it. It is not brand new but is in good condition. Can be tried at the Special Events day. £35. Contact Paul Bellamy

Record Power DML24 lathe - Paul Bellamy

This was my second lathe but since getting a larger one it has had little use, mainly for club shows. It is three speed and as with all Record Power lathes, it is MT1 and has 3/4" x 16TPI headstock. Any questions, please ask. £100. I can deliver and help setup if you want but it should fit in just about any vehicle.

It will be at the Special events day.

WANTED

Poplar - green or dry

Does anyone have or know of anywhere I can get some poplar wood? I am making traction engine brake shoes and this is the best wood for that purpose. If you can help please get in touch. Paul Bellamy



Member services

A request was made at the AGM for a list of club member's 'expertise' and interests. This would be difficult to administer for various reasons but the committee suggested having a section where members could offer their abilities to other members, so here it is. I hope it will grow as more of you are prepared to offer help or advice to other members.

I have not given telephone numbers or email addresses here as the newsletter is open to anyone on the 'net. I suggest you make contact at the club meetings or via a member of the committee

Ron Dixon Ron has many years experience in woodworking and can show you how to sharpen traditional hand saws He also owns a larger planer/ thicknesser and is happy to let members use it on their own timber. Editor's note: If you take up Ron's offer to use his planer, please make sure there are no foreign objects in your wood!

Dererk Pyatt Derek has run his own tool supply business for many years but has now retired. However, he still has some spare parts for machinery e.g. drive belts. He is also able to supply spares and attachments for the obsolete Coronet brand. If you are looking for something, it would be worth having a chat with him. Unfortunately he can no longer supply bandsaw blades.

Paul Bellamy I have built up a lot of experience using eBay for buying and selling. It can be a great way to add to your tools but there are a few points to watch out for. If you need any help, please get in touch. My first tip is "just because it's on ebay, doesn't guarantee it's the best price".

The ubiquitous computer

Ron Dixon forwarded a document to me last week which I am sure will have many of you smiling. It has comments made by computer users. Unbelievable, but supposedly they are all true!!!!

Tech support: What kind of computer do you have?
Female customer: A white one...

Customer: Hi, this is Maureen. I can't get my diskette out.
Tech support: Have you tried pushing the button?
Customer: Yes, sure, it's really stuck.
Tech support: That doesn't sound good; I'll make a note.
Customer: No, wait a minute... I hadn't inserted it yet... it's still on my desk... sorry....

Tech support: Click on the 'My computer' icon on to the left of the screen.
Customer: Your left or my left?
(Actually I find this amusing for another reason as the 'My Computer' icon could be anywhere on the screen, so back to you, Tech Support. Ed.)

Tech support: Good day. How may I help you?
Male customer: Hello... I can't print.
Tech support: Would you click on "Start" for me and...
Customer: Listen pal; don't start getting technical on me! I'm not Bill Gates.

Customer: Hi, good afternoon, this is Martha, I can't print. Every time I try, it says 'Can't find printer'. I've even lifted the printer and placed it in front of the monitor, but the computer still says he can't find it...

These set me wondering if similar things have happened with woodturning. Have you heard or even made a comment like these?

More next month



Special Events Day

Entry = £2 per person (including free raffle ticket). All under 16's Free!

You are invited to come along and immerse yourself in the wonderful world of Woodturning. Stay for the whole day or just hop along for a couple of hours to see what's going on! There will be several displays and "Hands-on" taster sessions running throughout the day. The current programme of events includes the following:

- **Woodturning Gallery**

There will be a gallery of work for you all to enjoy and marvel at. You are also invited to bring along some of your best pieces of work to put on display. There will be an award for the "Best in Show" and you are allowed to enter as many items as you wish.

- **Prize Draw Raffle**

Your entry ticket will also give you free entry into a raffle. Various prizes will be on offer including Woodturning Timber Bundles, a Bottle of Wine, Chocolates and other goodies that have all been donated by club members.

- **Hands-On Taster Sessions**

There will be four woodturning lathes available to "have a go", swap ideas and learn new techniques etc.

- **Exotic Timber Sales**

Lee Baines from Woodwise UK will have a sales table of exotic timbers and woodturning blanks. Woodwise UK are based in Buxton, Derbyshire, and supply fine exotic timbers from all around the world. They have many years experience in the trade so should be able to fulfil any exotic timber requirements that you may have. Wood will be on offer at discounted rates for the day. For further details visit www.woodwiseuk.com.

- **Bandsaw Set-Up and Maintenance with Derek Pyatt**

Ever had problems installing a new blade or setting up your Bandsaw to get it to cut straight and true? Then Derek will be on hand to show you all the tricks of the trade and answer any questions.

- **Tool Sharpening Techniques and Grinding Jigs with Paul Bellamy**

We all know that a blunt tool can be a dangerous tool, but are you having problems keeping your equipment sharp or can't decide which grinding jigs to buy? Then bring your tools along to have a go on a variety of set-ups including Robert Sorby grinding jigs, Veritas, Phil Irons and Wolverine systems. Paul will be on hand to offer any assistance or advice.

For further details, please contact
the club secretary
Dawn Hopley
on
01543 878714
or
secretary@mswa.co.uk

- **Saw Tooth Sharpening with Ron Dixon**

Ever wondered how to keep your teeth nice and sharp? Then Ron has kindly volunteered to show you just how! Why not bring along your blunt saws and get them sharpened in time for summer?

- **Special Tools & Gouges**

A range of some of the more unusual or expensive tools and gouges will be available for you "try before you buy". These will include Chatter Tools, Spiral Tools, Thread Chasers, Hollowing Gouges, Spindle Master and Ring Tools. If you also have any rare tools that you wish to show off, then please do bring them along!

- **Woodturning Slideshow or DVD**

Want to put your feet up and relax for a while? Then sit down and enjoy a Woodturning DVD or watch a Slideshow of Woodturning Work from around the world.

- **Bring & Buy Sales Table**

Have you got any tools or equipment that you would like to sell or exchange? Then bring them along to include in a bring and buy sale. Make sure you attach a label that includes your name and the price!

- **Tea, Coffee, Cakes & Biscuits**

Refreshments will be available all day long with all proceeds going to the CHADS charity. Bring your own packed lunch if you are planning to stay all day!

- **Approximate Timetable:**

10am – Doors Open
2pm – Woodturning Gallery – Judging Begins!
3pm – Raffle and Gallery Awards
4pm – Kicking Out Time!

